

A PLAT OF

# JUPITER NARROWS

PHASE A  
GOMEZ GRANT  
MARTIN COUNTY, FLORIDA  
SEPTEMBER, 1984

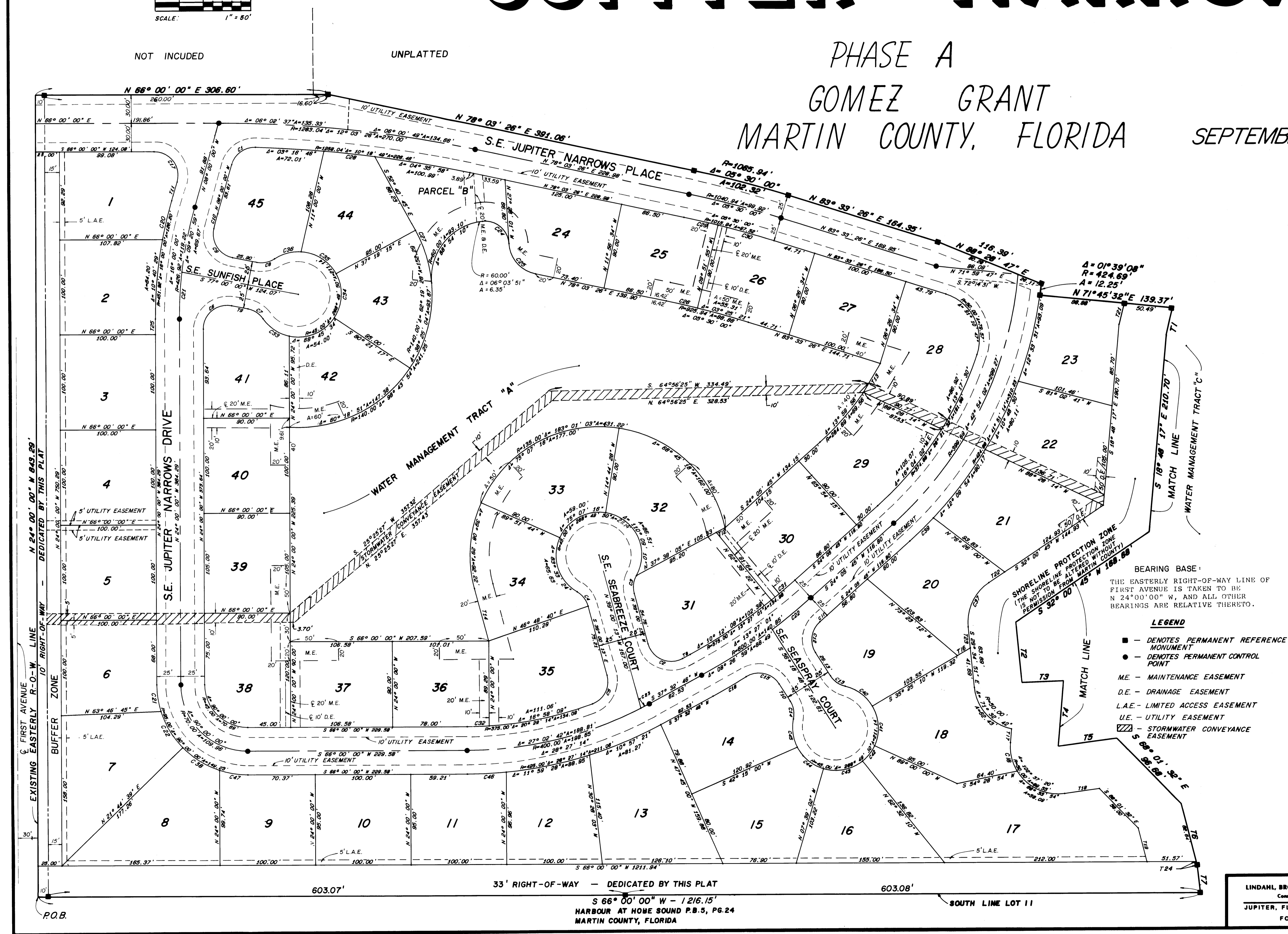
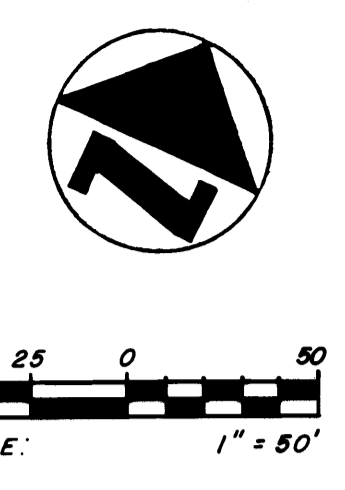
I, Louise V. Isaacs, Clerk of the Circuit Court of Martin County, Florida, hereby certify that this Plat was filed for record in Plat Book 9, Page 81, Martin County, Florida, Public Records, this day of \_\_\_\_\_, 1984.

Louise V. Isaacs, Clerk  
Circuit Court  
Martin County, Florida

By: \_\_\_\_\_  
Deputy Clerk

File No. \_\_\_\_\_

(Circuit Court Seal)



LABEL	BEARING	DISTANCE
T1	S 10° 13' 32" E	26.09
T2	S 29° 34' 51" E	63.89
T3	N 63° 58' 38" E	43.32
T4	S 19° 08' 42" E	69.14
T5	N 58° 12' 58" E	62.15
T6	S 38° 10' 05" E	66.52
T7	S 30° 22' 31" E	29.43
T8	S 37° 32' 46" N	9.03
T9	N 77° 00' 00" E	17.36
T10	N 58° 18' 48" N	21.70
T11	N 08° 00' 00" W	20.39
T12	N 37° 58' 08" E	10.32
T13	S 08° 32' 48" N	35.26
T14	S 38° 00' 13" E	57.04
T15	S 37° 38' 05" N	10.39
T16	N 35° 25' 10" E	15.78
T17	S 19° 08' 42" E	14.45
T18	N 58° 12' 58" E	36.81
T19	S 38° 10' 05" E	36.89
T20	S 10° 13' 32" E	12.36
T21	S 10° 13' 32" E	22.80
T22	S 32° 00' 45" N	20.00
T23	S 29° 34' 51" E	22.20
T24	N 38° 10' 05" W	3.87
T25	N 24° 00' 00" W	16.28

LABEL	RADIUS	CENTRAL ANGLE	ARC LENGTH
C1	25.00	75° 44' 36"	33.05
C2	25.00	103° 27' 01"	45.14
C3	25.00	44° 24' 55"	19.39
C4	25.00	44° 24' 55"	19.39
C5	25.00	84° 30' 58"	36.88
C6	25.00	101° 00' 00"	44.07
C7	25.00	44° 24' 55"	19.39
C8	25.00	44° 24' 55"	19.39
C9	25.00	92° 40' 46"	40.44
C10	401.92	06° 19' 14"	16.28
C11	628.00	00° 55' 04"	10.01
C12	25.00	81° 19' 36"	35.49
C13	25.00	44° 24' 55"	19.39
C14	25.00	44° 24' 55"	19.39
C15	25.00	89° 49' 31"	39.19
C16	628.00	03° 41' 05"	40.19
C17	25.00	106° 00' 00"	46.25
C18	50.00	36° 03' 25"	31.47
C19	25.00	33° 11' 54"	14.49
C20	451.92	08° 19' 31"	42.00
C21	95.00	17° 06' 57"	28.38
C22	95.00	27° 08' 24"	43.00
C23	400.00	01° 24' 32"	3.84
C24	25.00	92° 24' 10"	40.32
C25	35.00	74° 28' 33"	45.49
C26	925.94	02° 04' 39"	33.58
C27	140.00	23° 54' 24"	58.42
C28	1258.04	02° 26' 05"	53.46
C29	1015.94	02° 04' 39"	36.84
C30	1015.94	03° 25' 21"	60.68
C31	575.00	03° 14' 54"	32.60
C32	375.00	03° 31' 06"	23.03
C33	45.00	43° 00' 38"	33.78
C34	45.00	62° 19' 28"	48.95
C35	45.00	57° 30' 44"	45.17
C36	45.00	37° 13' 25"	29.24
C37	50.00	61° 35' 36"	53.75
C38	95.00	27° 34' 06"	45.71
C39	424.69	04° 40' 12"	34.62
C40	45.00	46° 08' 53"	36.24
C41	45.00	55° 34' 50"	43.85
C42	45.00	29° 27' 50"	29.78
C43	45.00	54° 53' 08"	43.11
C44	45.00	46° 50' 18"	38.79
C45	45.00	38° 54' 51"	30.56
C46	425.00	05° 30' 25"	40.85
C47	95.00	18° 10' 32"	30.14

BEARING BASE:  
THE EASTERLY RIGHT-OF-WAY LINE OF FIRST AVENUE IS TAKEN TO BE N 24° 00' 00" W, AND ALL OTHER BEARINGS ARE RELATIVE THERETO.

- LEGEND**
- - DENOTES PERMANENT REFERENCE MONUMENT
  - - DENOTES PERMANENT CONTROL POINT
  - M.E. - MAINTENANCE EASEMENT
  - D.E. - DRAINAGE EASEMENT
  - L.A.E. - LIMITED ACCESS EASEMENT
  - U.E. - UTILITY EASEMENT
  - WATER MANAGEMENT TRACT A, B, C

LINDAHL, BROWNING, FERRARI & HELLSTROM, INC. Consulting Engineers, Planners & Surveyors		2	3
JUPITER, FLORIDA	STUART, FLORIDA	FORT PIERCE, FLORIDA	